

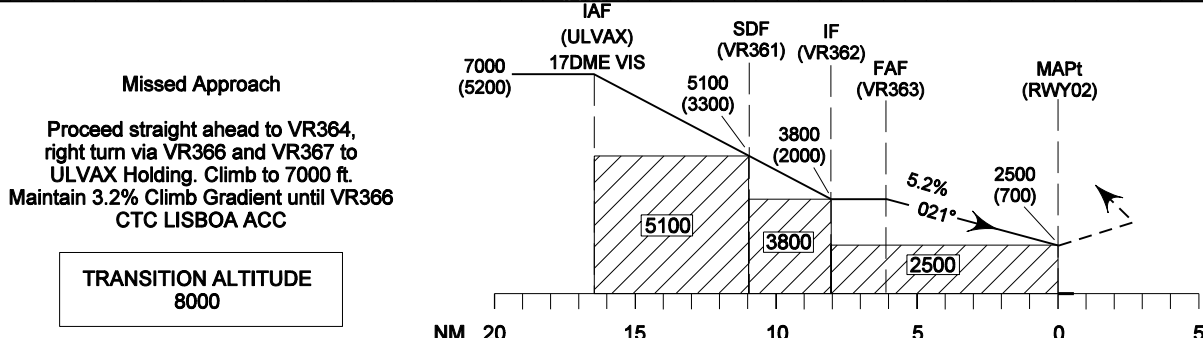
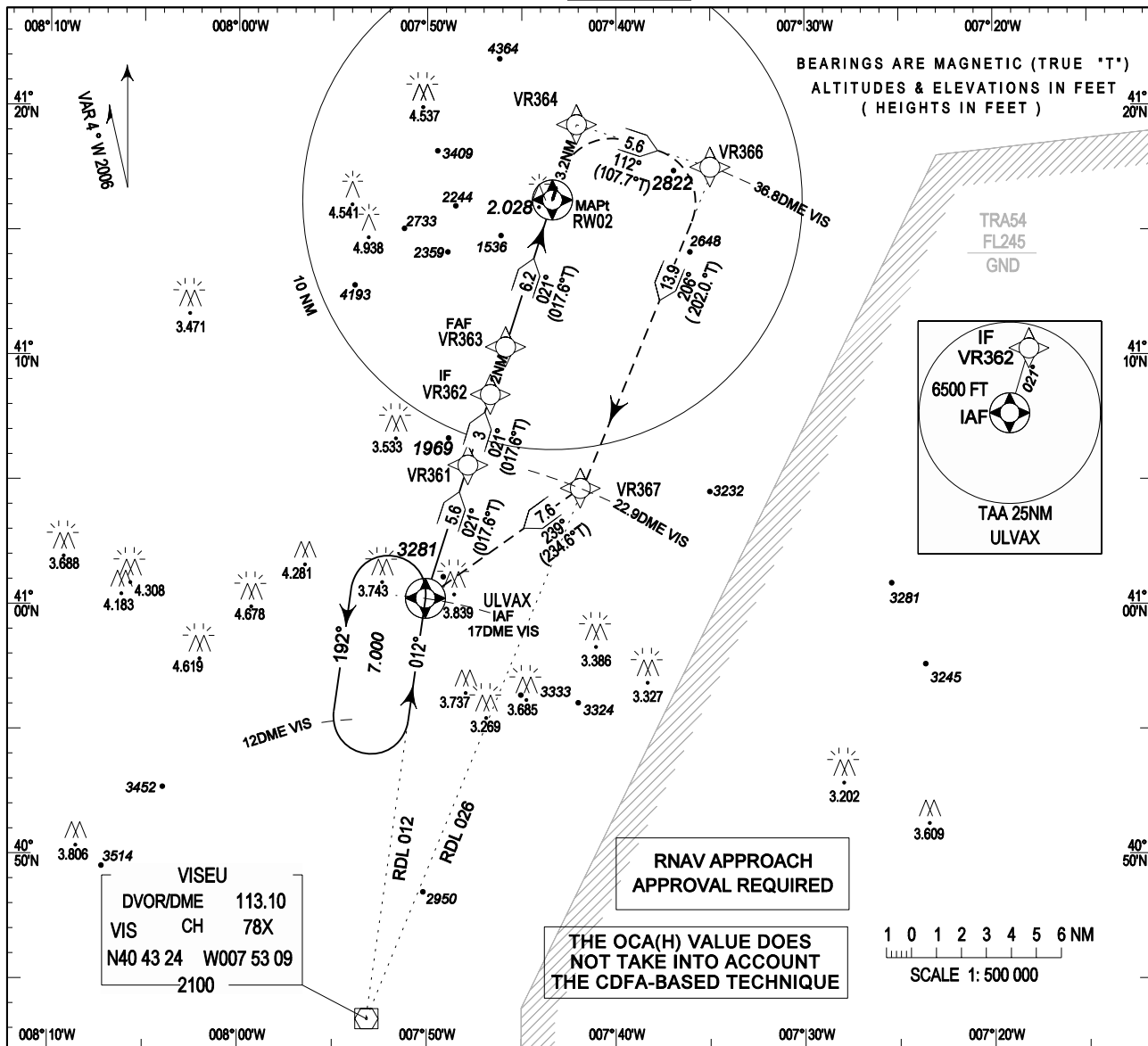
**INSTRUMENT
APPROACH
CHART - ICAO**

AD ELEV 1832ft
HEIGHTS RELATED
THR RWY 02 - ELEV 1800ft

ACC 132.300
FIS 130.900
AFIS 122.900

VILA REAL / LPVR

RNAV (GNSS)
RWY02
CAT A-B



OCA (H)			Missed Approach Climb Gradient
CAT of ACFT	A	B	
LNAV	2500	2500	3.2% *
CIRCLING	EAST 02/20	2650	
	WEST 02/20	2500	

* Missed Approach 3.2% climb gradient shall be maintained until VR366
(See table for data integrators, LPVR AD 2.22)

Comment about The OCA Value Inserted