

FOR FLIGHT SIMULATION ONLY :: VATSIM - Portugal vACC

AIP PORTUGAL

LPPS AD 2.24.9C1 - 1

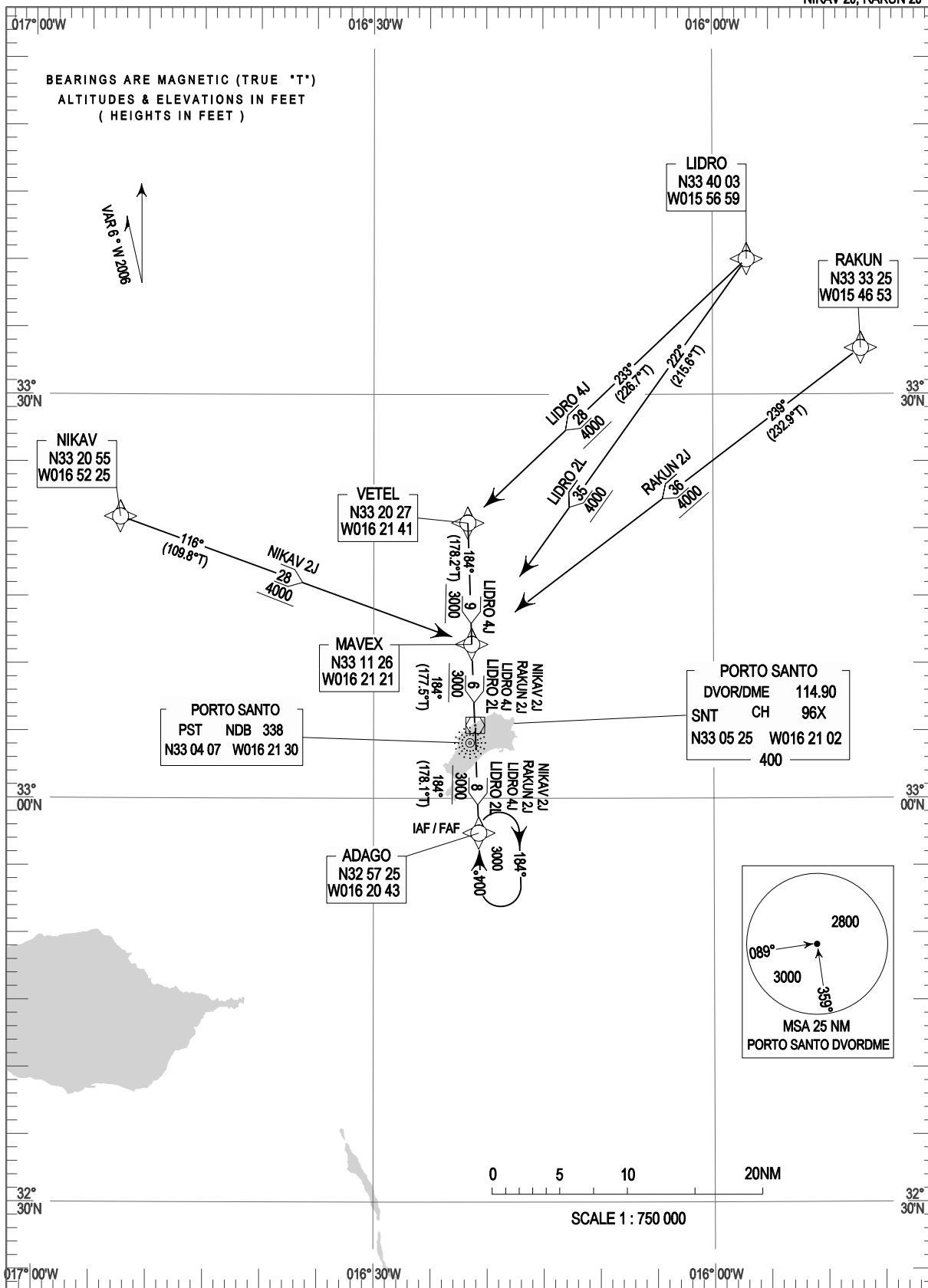
10-MAR-2011

RNAV
STANDARD ARRIVAL CHART -
INSTRUMENT (STAR) - ICAO

TRANSITION ALTITUDE
5000

MADEIRA APP 119.200
PORTO SANTO TWR 118.400

PORTO SANTO (LPPS)
RWY 36
LIDRO 2L, LIDRO 4J
NIKAV 2J, RAKUN 2J



FOR FLIGHT SIMULATION ONLY :: VATSIM - Portugal vACC

AIP PORTUGAL

LPPS AD 2.24.9C2 - 1

10-MAR-2011

RNAV
STANDARD ARRIVAL CHART -
INSTRUMENT (STAR) - ICAO

TRANSITION ALTITUDE
5000

MADEIRA APP 119.200
PORTO SANTO TWR 118.400

PORTO SANTO (LPPS)
RWY 36
MADAT 2J, KEKOS 2J

